



Uniform Mélange

cat. Maxi

68% new wool 22% nylon 10% polyester
Flame retardant - 100.000 Martindale



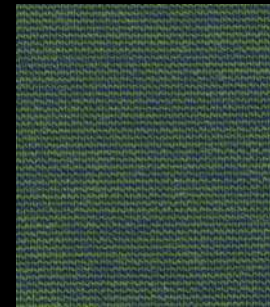
aloë 0913



oase 0963



cyan 0833



peacock 0983



cactus 0993



ice 0813



jeans 0723



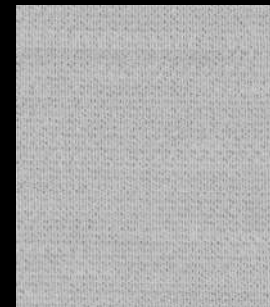
sea 0753



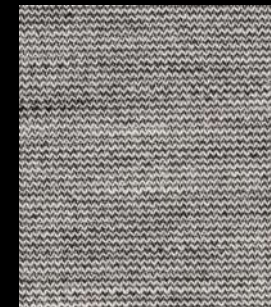
hydro 0883



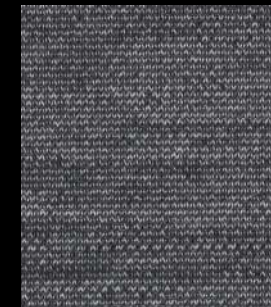
ink 0793



smoke 0123



ash 0133



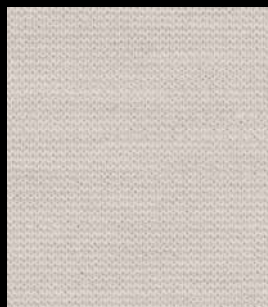
stone 0163



chalk 0183



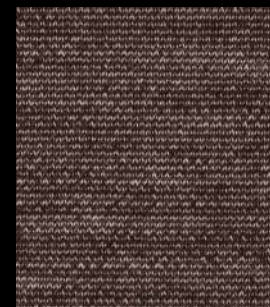
charcoal 0193



shell 0103



clay 0153



café 0283



sunset 0463



autumn 0553



solar 0453



copper 0353



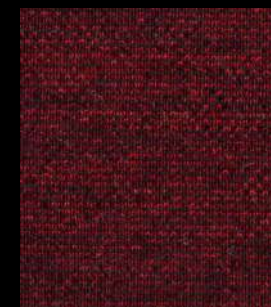
oil 0333



coral 0623



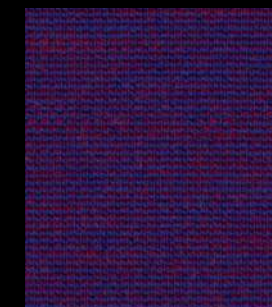
rumba 0563



tango 0593



violet 0633



blueberry 0683

Composition	68% new wool 22% nylon 10% polyester
Weight	Gr./ml 870
Abrasion test	Martindale - ISO 12947-2: 100.000 rubs
Lightfastness	ISO 105-B02: 6
Pilling	ISO 12945-2: 4
Fastness to rubbing	ISO 105-X12: Wet 4 Dry 4/5
Flame retardant	EN 1021-1/2 BS 5852 part 1 DIN 4102-B2 US Cal. Tech. Bull. 117 IMO FTP Code part 8 BS 5852 Crib 5 with treatment
Features	STRETCH MATERIAL
Environment	GREENGUARD GOLD HPD EPD

Technical details